

# Analyze & Visualize SQL Server Data w/ PowerPivot, PowerView & Excel

Wylie Blanchard

Lead IT Consultant; SQL Server DBA

# About Great Tech Pros

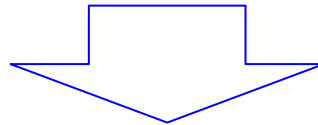
- Great Tech Pros was founded in 2012
- Specialties include:
  - IT Consulting
  - Database Administration, Management
  - Data Analysis
  - Website Design and Development
  - Professional Training and Presentations
- Visit us at [www.GreatTechPros.com](http://www.GreatTechPros.com)

# Speaker



## Wylie Blanchard

- SQL Server Database Consultant
- MCSE: SQL Server Data Platform
- Website: [WylieBlanchard.com](http://WylieBlanchard.com)
- LinkedIn: [in/WylieBlanchard](https://in.linkedin.com/in/WylieBlanchard)
- Twitter: [@WylieBlanchard1](https://twitter.com/WylieBlanchard1)

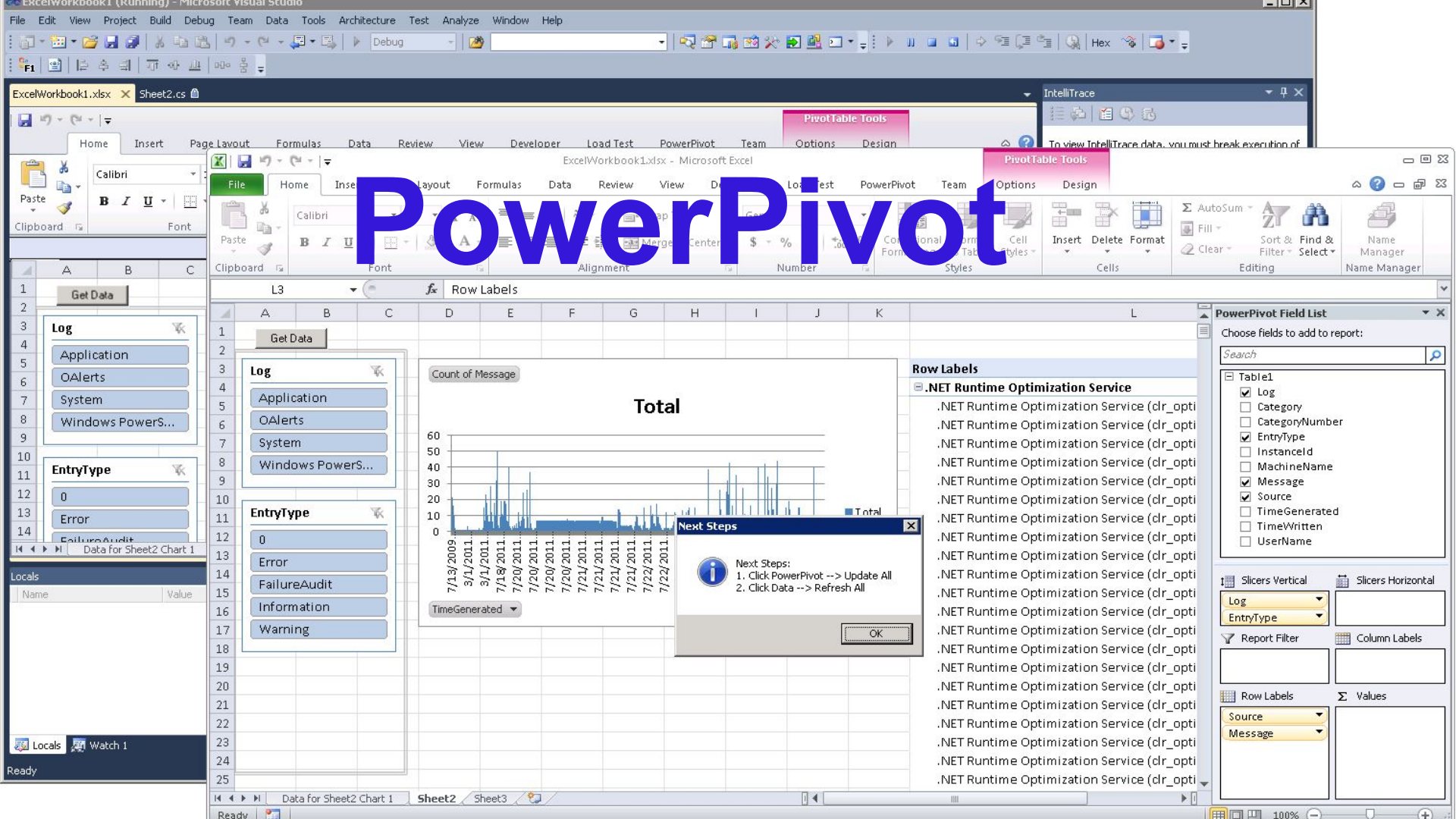


- Pizza Connoisseur (self proclaimed)

# Presentation Summary

Your end users want to analyze data in your data warehouse. They could deal with the learning curve of SSAS but they'd prefer to utilize a familiar application like MS Excel.

Welcome PowerPivot, a tool that retrieves data from your data warehouse by combining the power of SSAS models and your SQL Server Data warehouse within the familiar interface of MS Excel.



# What is PowerPivot

- Extends MS Excel Data Models
- Allows users to conduct powerful business intelligence (BI) analysis with a familiar tool
  - Quickly import millions of rows
  - Create relationships between different data sources
  - Use DAX (Data Analysis Expressions) language to create calculated fields (similar to excel formulas)

# Why Use PowerPivot for Excel

- Self Service Business Intelligence tool for experienced MS Excel professionals
- PowerPivot is NOT new to excel users, it's just an extension of what you already know
- Table Relationships are more efficient than VLOOKUP



# Faster, Bigger, Smaller

- Calculates formulas faster than excel spreadsheet
- Import large data sets without “row import limitations”
- Enhance compression for smaller file sizes



# Brief History - PowerPivot

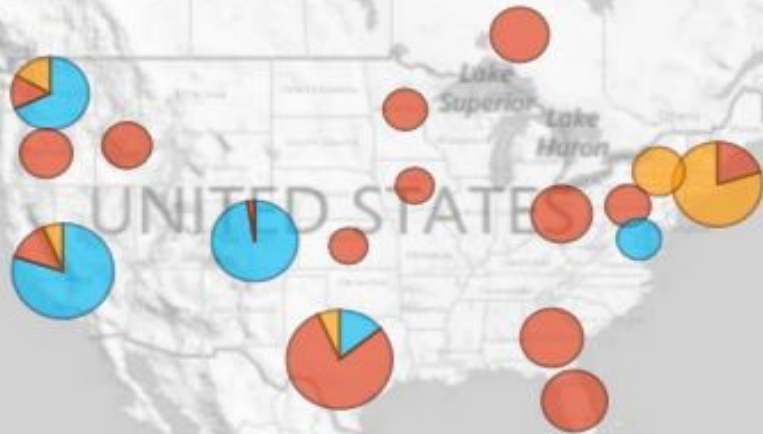
- 2006 Amir Net introduced a BI “sandbox” concept that allows BI applications to be created easily
  - Originally intended for MS Access, not Excel
  - Conceived to utilize in-memory for fast processing
- 2010 Microsoft released **PowerPivot for Excel** and **PowerPivot for SharePoint** with the release of Microsoft SQL Server 2008 R2

# Power Pivot's Growth

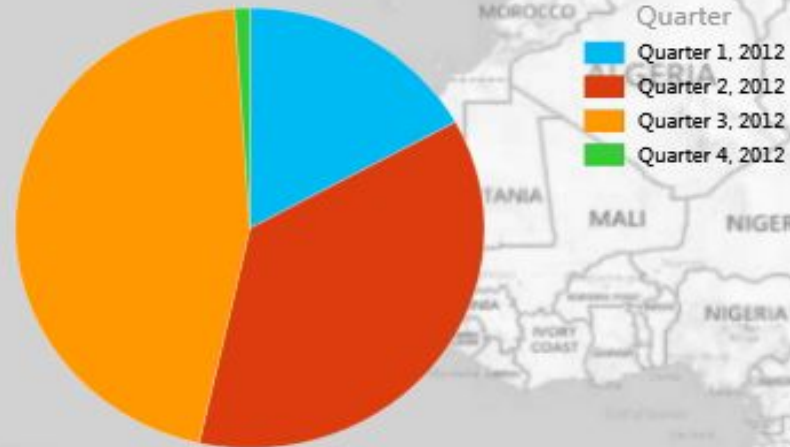
- Microsoft renamed PowerPivot as "Power Pivot"
  - (note the spacing in the name)
- In Excel 2010 & 2013, it is available as an Add-In
- In Excel 2016, it is included natively in the application in the data tab on the ribbon



# Power View



Customer due by quarter



# Explore, Visualize & Present your data

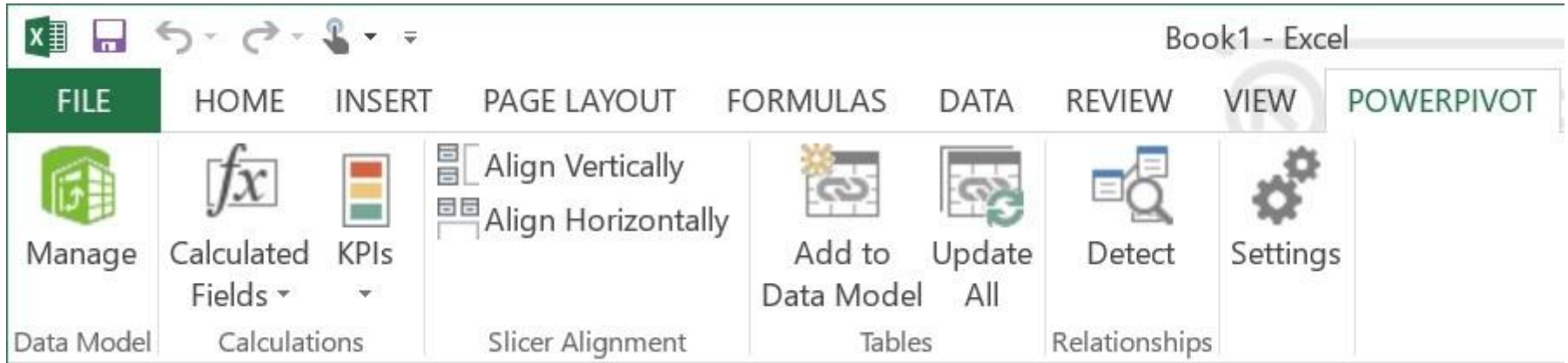
- Power View Enhances how you view data
  - Interactive dashboards
  - Connect to different data models in one workbook
- New Visualization options
  - Maps
  - Key performance indicators
  - Use of Hierarchies

# Demo



Demo Objective:

# Review PowerPivot MS Excel add-in



# Demo Objective:

# Import Data into Excel w/ PowerPivot

Table Import Wizard

**Select Tables and Views**

Select the tables and views that you want to import data from.

**Server:** LAPTOP-P3AJK7V7

**Database:** AdventureWorksDW2012

Tables and Views:

<input type="checkbox"/>	Source Table	Schema	Friendly Name	Filter Details
<input checked="" type="checkbox"/>	AdventureWorksDWBuildVersion	dbo		
<input type="checkbox"/>	DatabaseLog	dbo		
<input type="checkbox"/>	DimAccount	dbo		
<input type="checkbox"/>	DimCurrency	dbo		
<input checked="" type="checkbox"/>	DimCustomer	dbo	Customer	
<input checked="" type="checkbox"/>	DimDate	dbo	Date	
<input type="checkbox"/>	DimDepartmentGroup	dbo		
<input type="checkbox"/>	DimEmployee	dbo		
<input checked="" type="checkbox"/>	DimGeography	dbo	Geography	
<input type="checkbox"/>	DimOrganization	dbo		
<input checked="" type="checkbox"/>	DimProduct	dbo	Product	
<input checked="" type="checkbox"/>	DimProductCategory	dbo	Product Category	
<input checked="" type="checkbox"/>	DimProductSubcategory	dbo	Product Subcategory	
<input type="checkbox"/>	DimPromotion	dbo		
<input type="checkbox"/>	DimReseller	dbo		

# Demo Objective:

# Create a PivotTable using PowerPivot

Book1 - Excel

Wylie Blanchard

FILE HOME INSERT PAGE LAYOUT FORMULAS DATA REVIEW VIEW DEVELOPER POWER VIEW POWERPIVOT

### Order Quantities by Model Name

ModelName	OrderQuantity
All-Purpose Bike Stand	249
Bike Wash	908
Classic Vest	562
Cycling Cap	2190
Fender Set - Mountain	2121
Half-Finger Gloves	1430
Hitch Rack - 4-Bike	328
HL Mountain Tire	1396
HL Road Tire	858
Hydration Pack	733
LL Mountain Tire	862
LL Road Tire	1044
Long-Sleeve Logo Jersey	1736
ML Mountain Tire	1161
ML Road Tire	926
Mountain Bottle Cage	2035

Filters  
VIEW

To filter the view, drag fields from the field list.

### Power View Fields

ACTIVE ALL

- Freight
- OrderDate
- OrderDateKey
- OrderQuantity
- ProductKey
- ProductStandardCost
- PromotionKey
- RevisionNumber
- SalesAmount
- SalesOrderLineNumber
- SalesOrderNumber

Drag fields between areas below:

FIELDS

Sheet1 Power View1

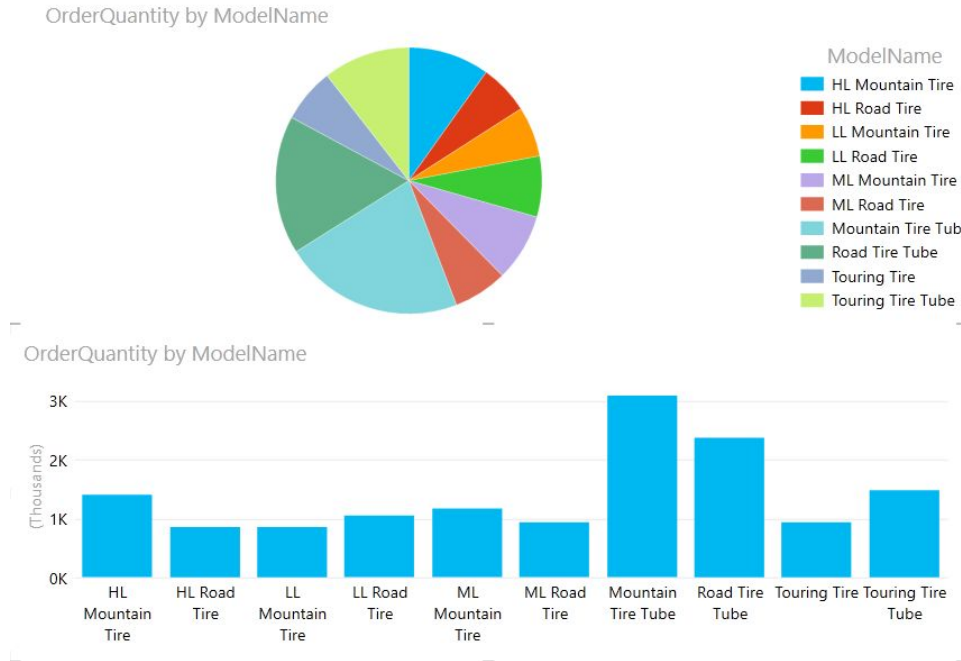
READY 100%



# Demo Objective:

# Create a Power View Visualization

## Order Quantities by Model Name



# Demo



# Thank You

## Feedback

- [GreatTechPros.com/feedback](https://GreatTechPros.com/feedback)
- [WylieBlanchard.com/feedback](https://WylieBlanchard.com/feedback)

# Resources / Recommended Reading

- Power Pivot: Powerful data analysis and data modeling in Excel - <https://support.office.com/en-us/article/Power-Pivot-Powerful-data-analysis-and-data-modeling-in-Excel-D7B119ED-1B3B-4F23-B634-445AB141B59B>
- Use a BI Semantic Model Connection in Excel or Reporting Services - [https://msdn.microsoft.com/en-us/library/hh230901\(v=sql.120\).aspx](https://msdn.microsoft.com/en-us/library/hh230901(v=sql.120).aspx)
- Get data from Analysis Services - <https://support.office.com/en-us/article/Get-data-from-Analysis-Services-ba86270b-5cc2-4bb9-a21d-8bafc20f0cd3>
- Business Intelligence Semantic Model – Creating Your First Tabular Model Project – Part 1 & 2 - <http://www.fmtconsultants.com/2013/09/business-intelligence-semantic-model-creating-your-first-tabular-model-project-part-1-of-2/>
- PowerPivot for Excel Tutorial Introduction - [https://msdn.microsoft.com/en-us/library/gg413497\(v=sql.110\).aspx](https://msdn.microsoft.com/en-us/library/gg413497(v=sql.110).aspx)

# Thank You

## Connect With Us

- Twitter: [@GreatTechPros](#)
- LinkedIn: [/company/Great-Tech-Pros](#)
- Google+: [+GreatTechPros](#)